



27 Stewart Drive, Hardgate
Offers Over £145,000
2 BED TERRACED HOUSE



 **McHugh**
Estate Agents



Features

2 Double Bedrooms

Floored attic with Velux window

Solar Panels and EV Charger

New Windows and Doors 2022

Luxurious Bathroom

Timber Summer House

Low maintenance front and rear gardens

Upgraded Boiler and Radiators

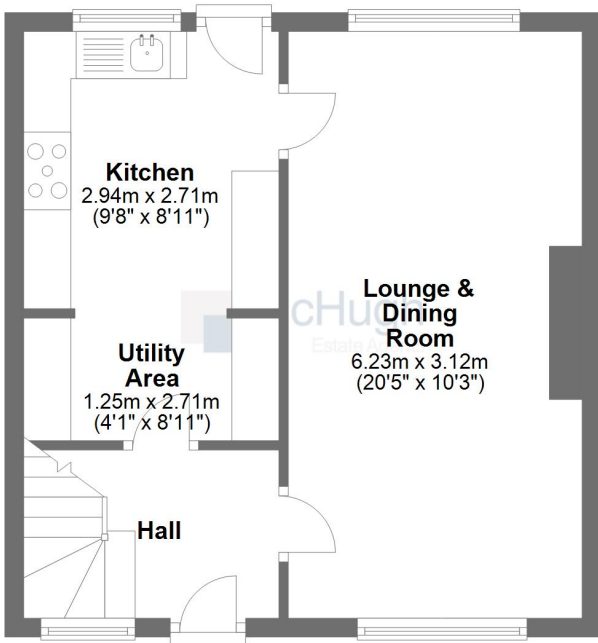
Opposite Goldenhill Primary School



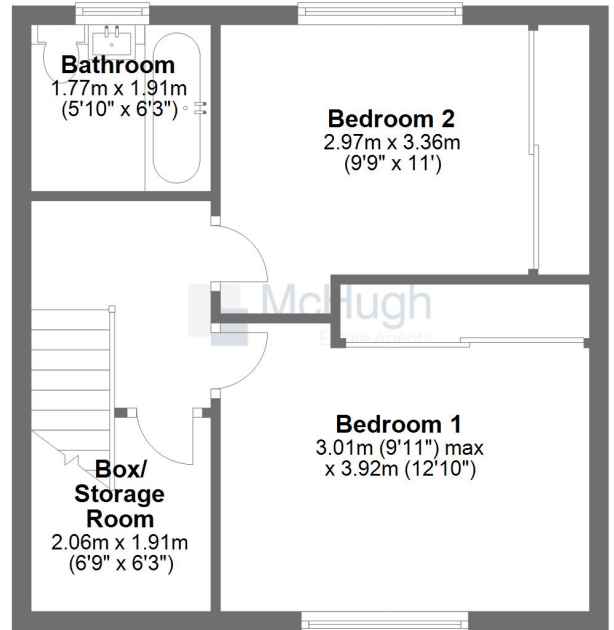
2 BED TERRACED HOUSE

27 Stewart Drive, Hardgate

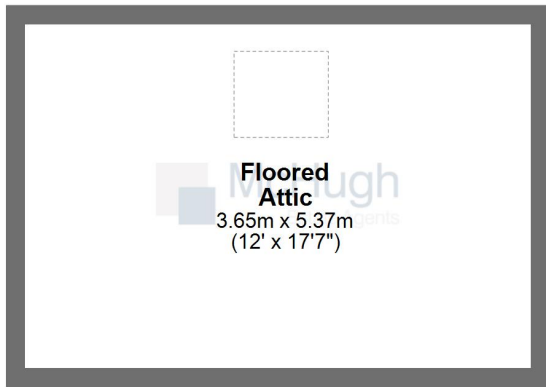
Ground Floor



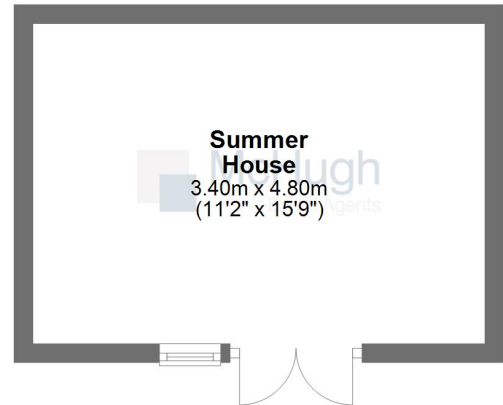
First Floor



Attic



Outbuilding



This floorplan has been created for guidance purposes only.
Plan produced using PlanUp.

27 Stewart Drive, Hardgate

Set back from the main thoroughfare and benefiting from residents' parking to the front, this larger style mid terrace villa offers surprisingly spacious family accommodation next to Goldenhill Park and just across the road from Goldenhill Primary School.

This superb, energy-efficient home has solar roof panels (3kW), an EV charger to the front, a large summer house, a floored and lined attic, new windows and doors (Dec 2022), upgraded central heating and a fabulous bathroom with a multi-jet bath and ceiling mounted speakers.

Accommodation

The entrance door accesses the bright hallway. Off the hall, the open-plan lounge and dining room is flooded with natural light and has pleasant outlooks to the front and rear. The modern shaker-style kitchen is well proportioned and comes complete with appliances (dishwasher, fridge/freezer, washing machine and a 5-ring range-style cooker). A door from the kitchen leads to the fully enclosed South facing rear garden.

On the upper floor, the main bedroom is located to the front of the property and benefits from fitted wardrobes. Bedroom two is a second double bedroom which has mirror door wardrobes and elevated outlooks over Clydebank. The designer bathroom has a modern vanity suite and spa bath with a dual function shower above. The floored and lined attic has a Velux window to the rear and is easily accessed via the walk-in cupboard on the landing.

Glazing and Heating

The property benefits from modern double glazing (2022) and an upgraded gas central heating system (Ideal combi-boiler).

Gardens

To the front of the property, there is an attractive, easily maintained garden. The rear garden is South facing, fully enclosed and laid with synthetic grass. There is a large timber summer house which has power and light and can easily be used for both outdoor accommodation and storage.

Location

Stewart Drive is a sought after location within the district with Hardgate Cross, Goldenhill Primary and bus services all within 5 minutes walk. Woodland paths and children's play areas at Goldenhill Park are just around the corner.

SAT NAV - G81 6AF

Dimensions

Lounge/Dining Room
6.23m x 3.12m

Kitchen
2.94m x 2.71m

Utility Room
1.25m x 2.71m

Bedroom 1
3.01m x 3.92m

Bedroom 2
2.97m x 3.36m

Bathroom
1.77m x 1.91m



Whilst we endeavour to make these particulars as accurate as possible, they do not form part of any contract on offer, nor are they guaranteed. Measurements are approximate and in most cases are taken with a digital/sonic measuring device and are taken to the widest point. We have not tested the electricity, gas or water services or any appliances. Photographs are reproduced for general information and it must not be inferred that any item is included for sale with the property. If there is any part of this that you find misleading or simply wish clarification on any point, please contact our office immediately when we will endeavour to assist you in any way possible.

McHugh Estate Agents

576 Kilbowie Road
Hardgate Cross
Clydebank
G81 6QU

01389 879941

info@mchughestateagents.co.uk