



21 Eskdale Road Bearsden G61 1JY

£



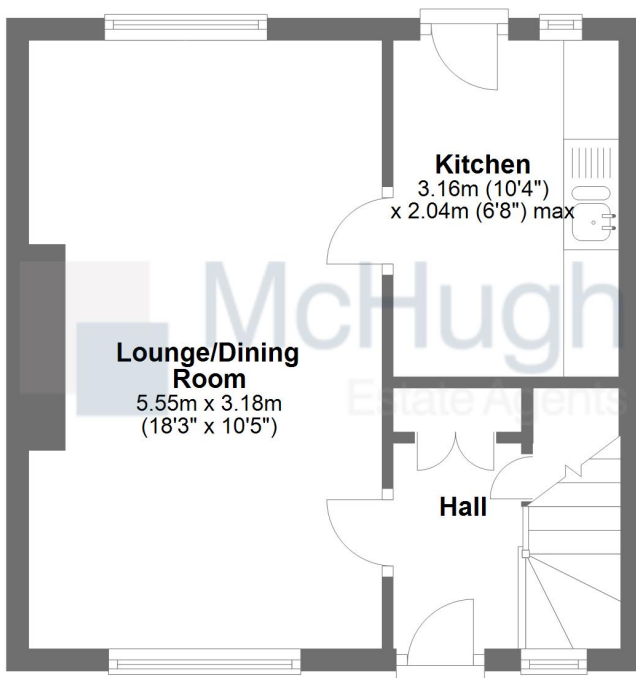
 **McHugh**
Estate Agents



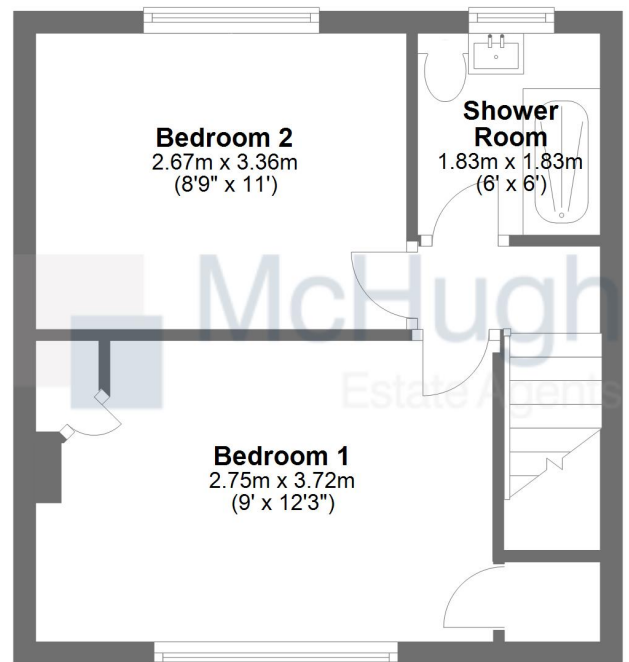
Features



Ground Floor



First Floor



This floorplan has been created for guidance purposes only.
Plan produced using PlanUp.

21 Eskdale Road Bearsden G61 1JY



Whilst we endeavour to make these particulars as accurate as possible, they do not form part of any contract on offer, nor are they guaranteed. Measurements are approximate and in most cases are taken with a digital/sonic measuring device and are taken to the widest point. We have not tested the electricity, gas or water services or any appliances. Photographs are reproduced for general information and it must not be inferred that any item is included for sale with the property. If there is any part of this that you find misleading or simply wish clarification on any point, please contact our office immediately when we will endeavour to assist you in any way possible.

McHugh Estate Agents

576 Kilbowie Road
Hardgate Cross
Clydebank
G81 6QU

01389 879941
info@mchughestateagents.co.uk